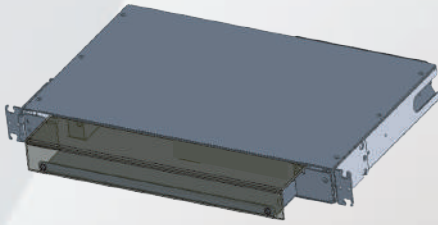


LRH SWING OUT HINGED TYPE RACK MOUNT ENCLOSURE



Features

- Swing out hinged type design, easy to access the rear and splice tray
- Front tray lockable
- Adjustable side rack position
- Maximum capacity up to 48 ports for 1U
- Comply with TIA / EIA 568B.3, Bellcore GR-326, IEC6 0 8 7 4-10, Telcordia, JIS compliance
- Rear and side cable entry feasible
- Full range of adaptor choices

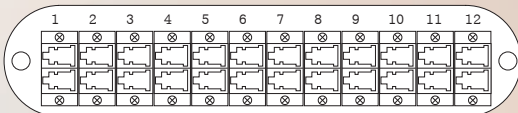
Specifications

Parameter	1U	2U
No. of Adaptor Plates (Max.)	2	4
No. of Ports (Max.)	≤ 24	≤ 48
No. of Splice Tray (Max.)	≤ 48(LC port)	≤ 96(LC port)
Material	2	4
Material	Cold Rolled Steel(SPCC)	Cold Rolled Steel(SPCC)
Color	Black	Black
Dimension (Height)	44mm	87mm
(width)	440mm	440mm
(Depth)	290mm	290mm
Weight (Net)	2.7kg	4.1kg

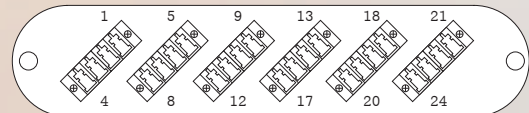
Adaptor Plate

- LC port

LC Duplex (24ports)

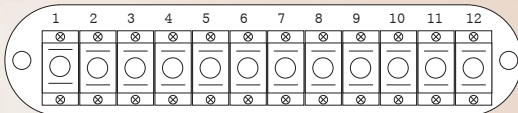


LC Quad (24ports)

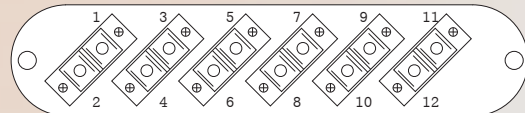


- SC port

SC Simplex(12Ports)



SC Duplex (12Ports)



- Others port

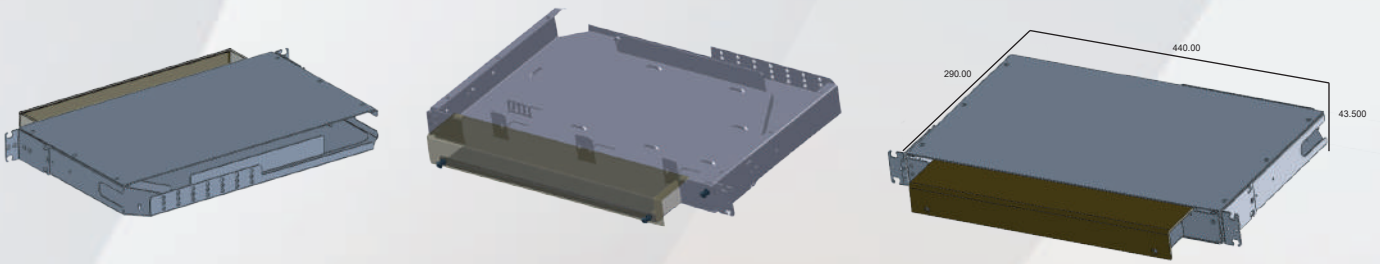
ST Simplex (12Ports)



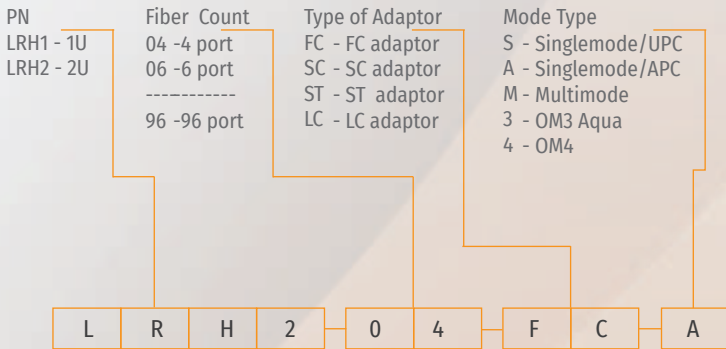
FC Simplex(12Ports)



Product Diagram



Ordering Information



*ordering code example