

## LVP series slide out panel

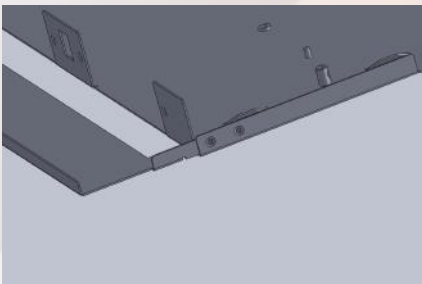


### Features

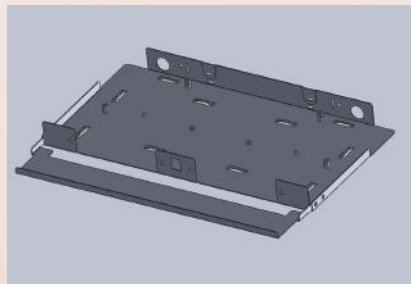
- Slide out design, easy to access the rear and splice tray
- Dual mounting poles for outdoor armored cable
- Rear and side cable entry
- Front patchcord tray for front & side cable management
- Comply with TIA / EIA 568B.3, Bellcore  
GR-326, IEC6 0 8 7 4-10, Telcordia, JIS compliance

### Specifications

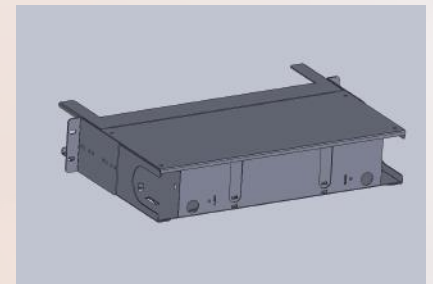
Parameter	1U	2U
No. of Adaptor Plates (Max.)	2	4
No. of Ports (Max.)	≤24(ST,FC,SC port) ≤64(LC port)	≤48(ST,FC,SC port) ≤128(LC port)
No. of Cable Entry Ports	4	4
No. of Splice Tray (Max.)	2	4
Material	Cold Rolled Steel(SPCC)	Cold Rolled Steel(SPCC)
Color	Black	Black
Dimension (Height)	44mm	88mm
(width)	446mm	446mm
(Depth)	309mm	309mm
Weight (Net)	3.5kg	4.1kg



Detachable front tray



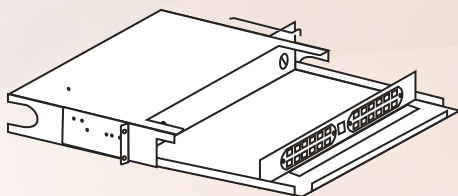
Four sides hooks on inner tray



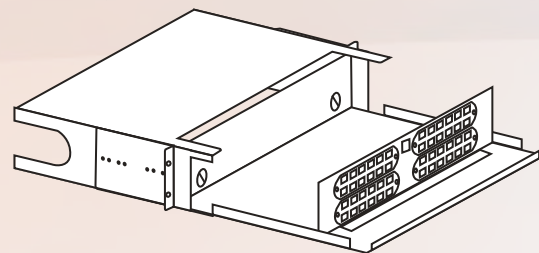
Rear and side cable entry

### Product Diagram

1U Type



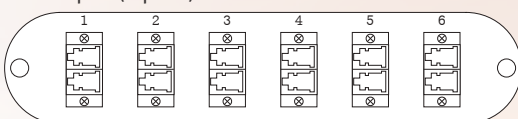
2U Type



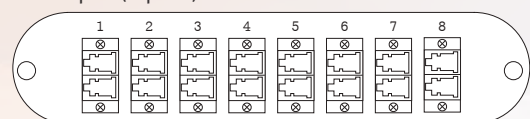
### Adaptor Plate

- LC port

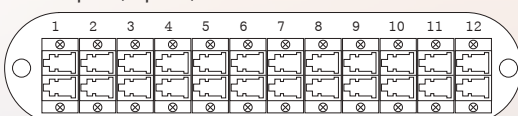
LC Duplex (12ports)



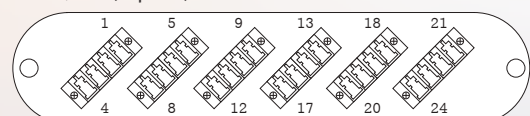
LC Duplex (16ports)



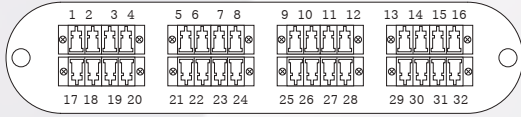
LC Duplex (24ports)



LC Quad (24ports)

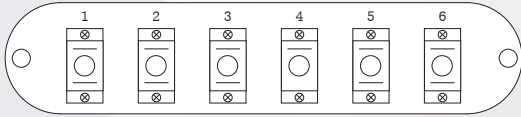


LC Quad (32ports)

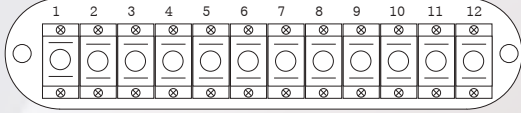


• SC port

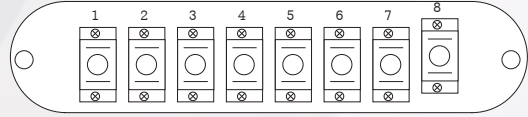
SC Simplex (6ports)



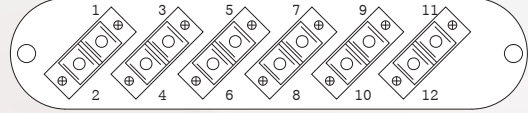
SC Simplex (12ports)



SC Simplex (8ports)

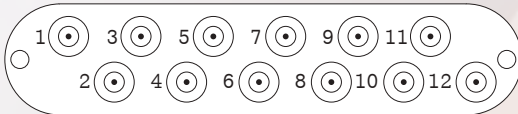


SC Duplex (12ports)

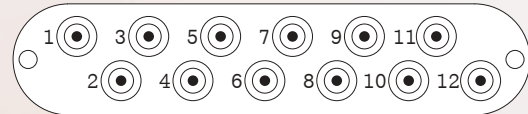


• Others port

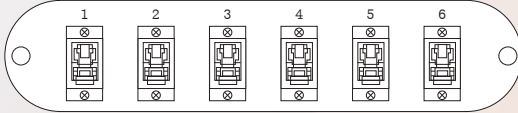
ST Simplex (12ports)



FC Simplex (12ports)



E2000 (6ports)



Blank Plate

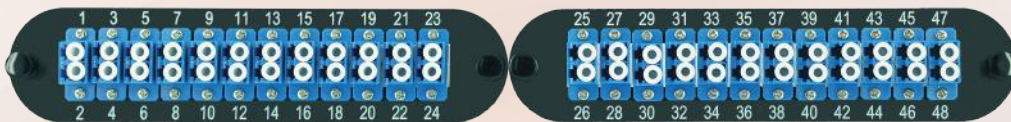


• Examples

LC Duplex (32ports)



LC Duplex (48ports)



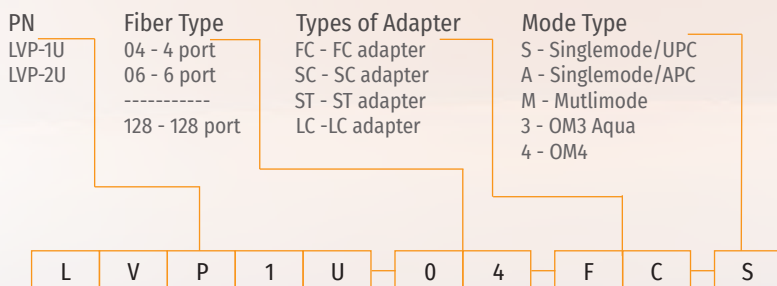
LC Quad (48ports)



LC Quad (64ports)



## Ordering Information



\*Ordering code example