

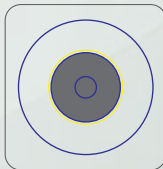
Fiber Patchcords & Pigtails

Lightem provides a broad selection of standard patchcords for your special patching need. Our production line equips with state of the art manufacturing facilities and sophisticated testing equipments. Lightem connectors feature durable construction to ensure reliable mating time after time. Only premium grade zirconia ferrules are selected for our connectors which feature ultra low concentricity; this ensures the finished patchcords have consistent lowest optical loss performance at your critical network. Together with our stringent quality management, we guarantee the Lightem patchcords meet or exceed industrial standard in terms of both optically and mechanically, which ensure your piece of mind patching installation.

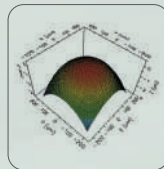
Features

- Low insertion loss with consistent performance
- 100% tested on IL and RL
- Easy identification by broad range of housing and boot colour
- Telcordia GR-326 compliant
- OS1, OS2, G657A1, G657A2, OM1(62.5/125), OM2(50/125), OM3 and OM4 fibers available
- Zirconia ferrule with high concentricity
- Cable Packaging: 900 μ m, 2 mm or 3 mm
- Cable outer jacket available in Riser (OFNR) and Low Smoke Zero Halogen (LSZH), Plenum (OFNP)
- Fast and trustful product delivery system
- Comply to TIA / EIA 568C-3 and ISO / IEC 11801

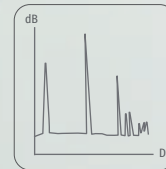
100% Lightem Assurance



Connector Surface Inspection



Geometric Inspection



Optical Inspection

Specifications

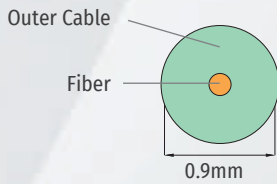
Model	Standard Connector *			E2000 Connector series		
	Singlemode		Multimode	Singlemode		Multimode
Connector type *	UPC	APC	PC	UPC	APC	PC
Insertion loss (dB)	< 0.3			< 0.4		
Return loss (dB)	>50	> 65	>25	>50	> 85	>40
Core/Cladding size	9/125 μ m		50/125 μ m or 62.5/125 μ m	9/125 μ m		50/125 μ m or 62.5/125 μ m
Cable count	Simplex or Duplex					
Cable Type	33 - 3mm twin cable					
Jacket type	PVC or LSZH					
Jacket Diameter	900 μ m, 2mm or 3mm			2mm or 3mm		
Operating temperature	-40 ~ +85 °C			-25 ~ +70 °C		

* Includes FC, SC, ST, LC, MU, FDDI, ESCON connectors

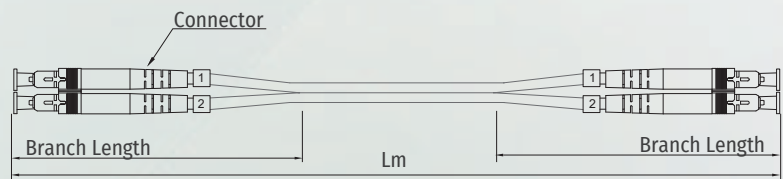
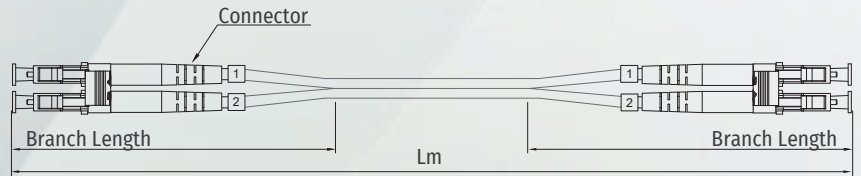
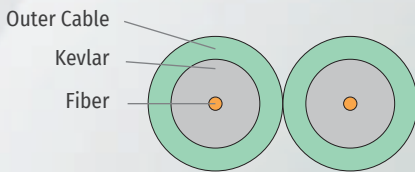
Optional LSZH Patchcord Fire Performances			
Flame retardant IEC 60332-1	Fire retardant IEC 60332-3	Low smoke opacity IEC 61034-1/2	Halogen free IEC 60754-1/2

Product Diagram

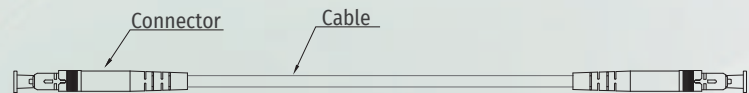
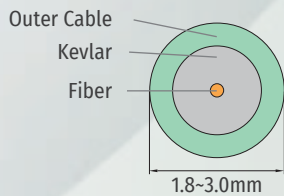
0.9mm Simplex Type



Duplex Type



1.8mm to 3.0mm Simplex Type



Ordering Information

Fiber type	Connector type1	Connector type 2	Cable Type	Lenght(m)	Cable Material
S5 - SM G655 Singlemode	Singlemode Type	XX - Pigtail	31 - 3mm simplex	0010 - 1m	P - PVC
S6 - SM G657A1 Singlemode	FU - FC/APC	Singlemode Type	32 - 3mm duplex	0015 - 1.5m	L - LSZH
S7 - SM G657A2(B)	FA - FC/APC	FU - FC/UPC	33 - 3mm twin cable	
SM - Singlemode	CU - SC/UPC	FA - FC/APC	21 - 2mm simplex	0990 - 99m	
M6 - MM OM1 62.5/125µm	CA - SC/APC	CU - SC/UPC	22 - 2mm duplex		
M5 - MM OM2 50/125µm	TU - ST/UPC	CA - SC/APC	61 - 1.6mm simplex		
M4 - MM OM4 50/125µm	LU - LC/UPC	TU - ST/UPC	62 - 1.6mm duplex		
MO - MM OM3 50/125µm	LA - LC/APC	LU - LC/UPC	82 - 1.8mm duplex		
	MJ - MU/UPC	LA - LC/APC	90 - 900 um simplex		
	MP - MTRJ w/o pin	MJ - MU/UPC	00 - others		
	MU - MTRJ with pin	MP - MTRJ w/o pin			
	EU - E2000/UPC	MU - MTRJ with pin			
	EA - E2000/APC	EU - E2000/UPC			
	DN - DIN/UPC	EA - E2000/APC			
	D4 - D4/UPC	DN - DIN/UPC			
	FD - FDDI	D4 - D4/UPC			
	Multimode Type	FD - FDDI			
	FC - FC	Multimode Type			
	SC - SC	FC - FC			
	ST - ST	SC - SC			
	LC - LC	ST - ST			
	ES - ESCON	LC - LC			
	FD - FDDI	ES - ESCON			
	MJ - MTRJ	FD - FDDI			
	MP - MTRJ with pin	MJ - MTRJ			
	S5 - SMA 905	MP - MTRJ with pin			
	S6 - SMA 906	S5 - SMA 905			
		S6 - SMA 906			

S 7 F U S C 3 1 0 0 1 0 P